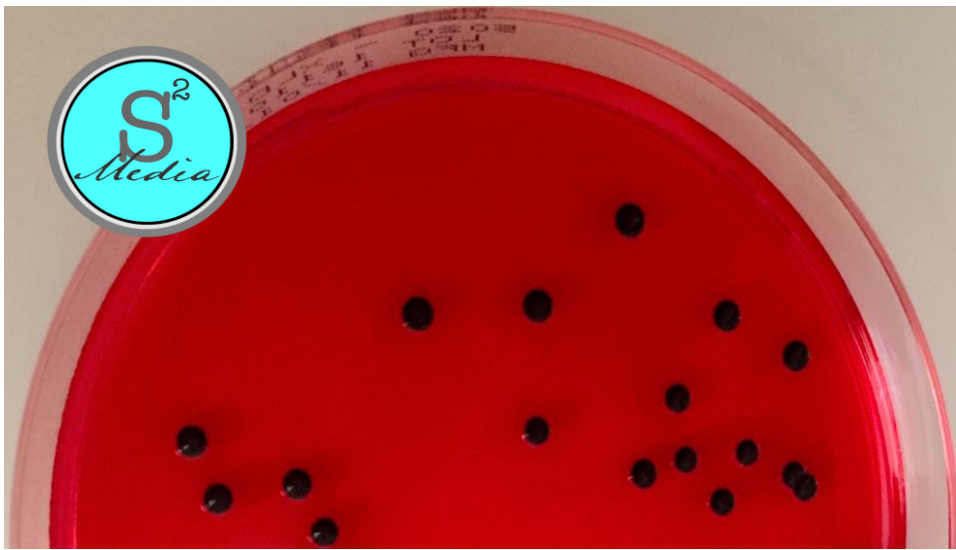


# PRODUCT INFORMATION

Xylose-Lysine Deoxycholate (XLD) Agar is utilized for the isolation and differentiation of gram-negative enteric bacteria



## XLD AGAR Material 5020

### PHYSICAL CHARACTERISTICS:

Appearance: Prepared medium is clear to trace hazy and bright red-orange

pH: 7.2 - 7.6 @25°C

### GROWTH RECOVERY:

Test Organisms	Expected Results
<i>Escherichia coli</i> ATCC® 25922	Partial inhibition; Yellow to yellow-red colonies
<i>Enterococcus faecalis</i> ATCC® 29212	Partial to complete inhibition; Small colorless colonies if present
<i>Salmonella typhimurium</i> ATCC® 14028	Good growth; Red colonies with black centers
<i>Shigella flexneri</i> ATCC® 12022	Good growth; Red to pink colonies

Note: The agar will turn yellow-orange to orange in color and hard callouses and a haze will form on the surface of the agar when incubated anaerobically.

### STORAGE AND HANDLING INSTRUCTIONS:

Store sealed sleeves inverted at 2-8°C upon receipt. Do not heat or freeze and minimize exposure to light. Plates should be warmed to room temperature prior to use - not to exceed 30°C. Product expiry is 183 days (6 months) from the date of manufacture. Reference our *Prepared Media Storage and Handling* document for additional information.

### FORMULA\* (per Liter):

Yeast Extract .....	3.0g
L-Lysine .....	5.0g
Xylose .....	3.5g
Lactose .....	7.5g
Sucrose .....	7.5g
Sodium Deoxycholate .....	2.5g
Ferric Ammonium Citrate .....	0.8g
Sodium Thiosulfate .....	6.8g
Sodium Chloride .....	5.0g
Phenol Red .....	0.08g
Agar .....	13.0g

\*Adjusted and/or supplemented as required to meet performance criteria

## S<sup>2</sup> Media

2205 North Woodruff Rd,  
Suite 9  
Spokane Valley, WA 99206  
(509) 919-3714

[www.s2cm.com](http://www.s2cm.com)  
[info@s2cm.com](mailto:info@s2cm.com)