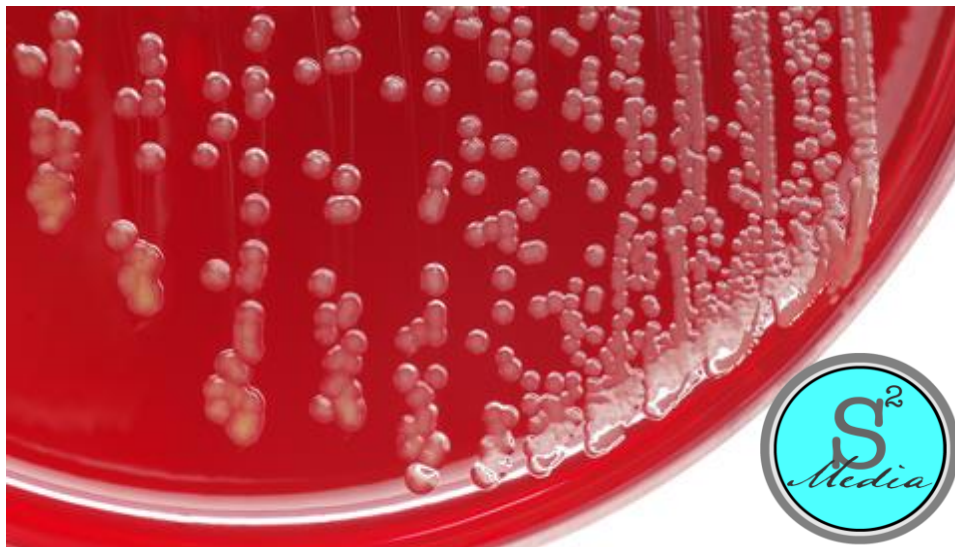


PRODUCT INFORMATION

This medium is utilized for the isolation and cultivation of most gram-negative and gram-positive obligate anaerobes - including fastidious strains



CDC ANAEROBIC AGAR WITH 5% SHEEP BLOOD Material 5031

PHYSICAL CHARACTERISTICS:

Appearance: Prepared medium is opaque and bright to dark red

pH: 7.3 - 7.7 @25°C

GROWTH RECOVERY:

Test Organisms	Expected Results
<i>Bacteroides fragilis</i> ATCC® 25285	Good growth
<i>Clostridium perfringens</i> ATCC® 13124	Good growth; β hemolysis
<i>Fusobacterium nucleatum</i> ATCC® 25586	Good growth
<i>Peptostreptococcus anaerobius</i> ATCC® 27337	Good growth

FORMULA* (per Liter):

Casein Digest Peptone	15.0g
Papaic Digest of Soybeans	5.0g
Yeast Extract	5.0g
Sodium Chloride	5.0g
L-Cystine.....	0.4g
Agar	15.0g
Vitamin K1	0.01g
Hemin	0.005g
Sheep Blood, Defibrinated	5%

*Adjusted and/or supplemented as required to meet performance criteria

STORAGE AND HANDLING INSTRUCTIONS:

Store sealed sleeves inverted at 2-8°C upon receipt. Do not heat or freeze and minimize exposure to light. Plates should be warmed to room temperature prior to use - not to exceed 30°C. Product expiry is 183 days (6 months) from the date of manufacture. Reference our *Prepared Media Storage and Handling* document for additional information.

S² Media

2205 North Woodruff Rd,
Suite 9
Spokane Valley, WA 99206
(509) 919-3714

www.s2cm.com
info@s2cm.com