

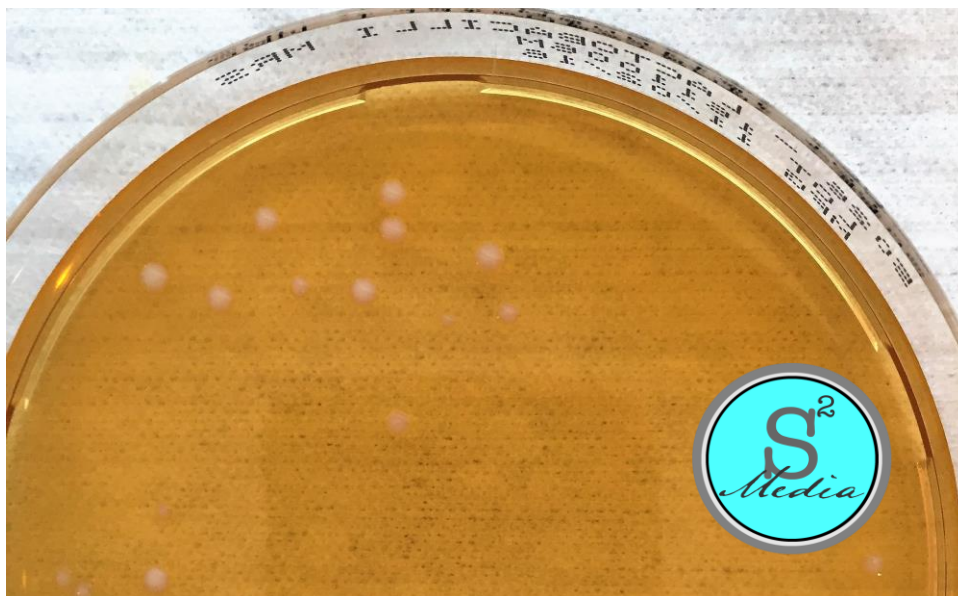
## PRODUCT INFORMATION

Also known as Lactobacilli MRS Agar, LMRS is a medium utilized for the selective isolation and enumeration of lactobacilli from various sources including clinical, food/beverage/dairy/industrial fermentation, and wastewater/environmental processes

### FORMULA\* (per Liter):

Proteose Peptone No. 3	10.0g
Beef Extract	10.0g
Yeast Extract	5.0g
Ammonium Citrate	2.0g
Dextrose	20.0g
Polysorbate 80	1.0g
Sodium Acetate	5.0g
Magnesium Sulfate	0.1g
Manganese Sulfate	0.05g
Potassium Phosphate, Dibasic	2.0g
Agar	15.0g

\* Adjusted and/or supplemented as required to meet performance criteria



# LACTOBACILLUS MRS (LMRS) AGAR

## Material 5026

### PHYSICAL CHARACTERISTICS:

Appearance: Prepared medium is trace to slightly hazy and light beige to amber  
pH: 6.3 - 6.7 @25°C

### GROWTH RECOVERY:

Test Organisms	Expected Results
<i>Lactobacillus acidophilus</i> ATCC® 4356	Good growth
<i>Lactobacillus casei</i> ATCC® 393	Good growth
<i>Lactobacillus fermentum</i> ATCC® 9338	Good growth

### STORAGE AND HANDLING INSTRUCTIONS:

Store sealed sleeves inverted at 2-8°C upon receipt. Do not heat or freeze and minimize exposure to light. Plates should be warmed to room temperature prior to use - not to exceed 30°C. Product expiry is 183 days (6 months) from the date of manufacture. Reference our *Prepared Media Storage and Handling* document for additional information.

## S<sup>2</sup> Media

2205 North Woodruff Rd,  
Suite 9  
Spokane Valley, WA 99206  
(509) 919-3714

[www.s2cm.com](http://www.s2cm.com)  
[info@s2cm.com](mailto:info@s2cm.com)